

DRAWING NO.

C984XX0022

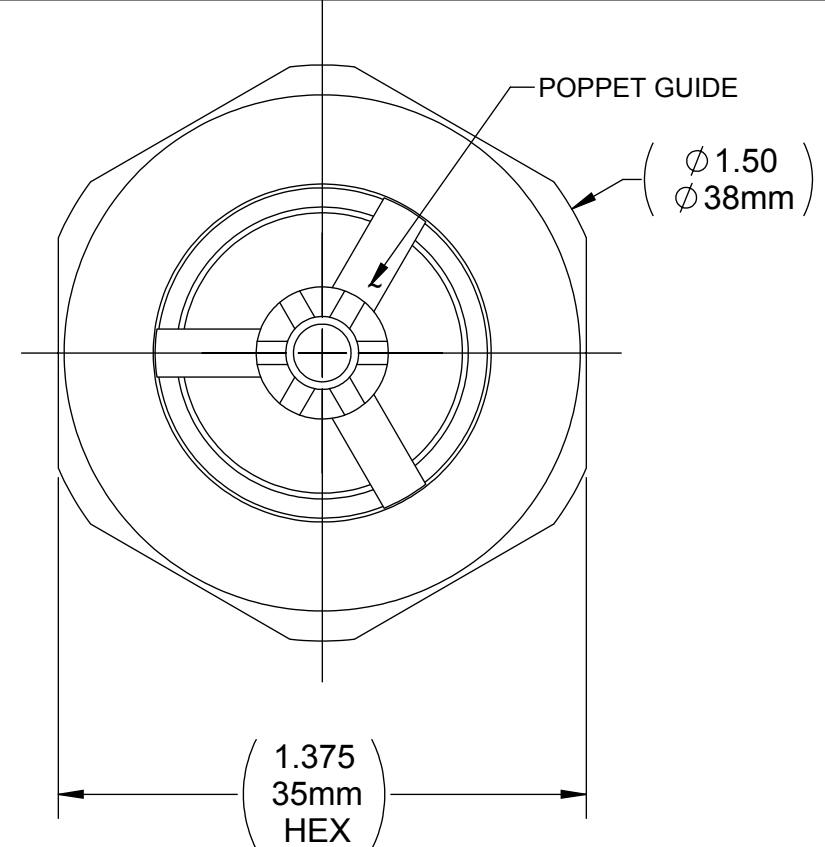
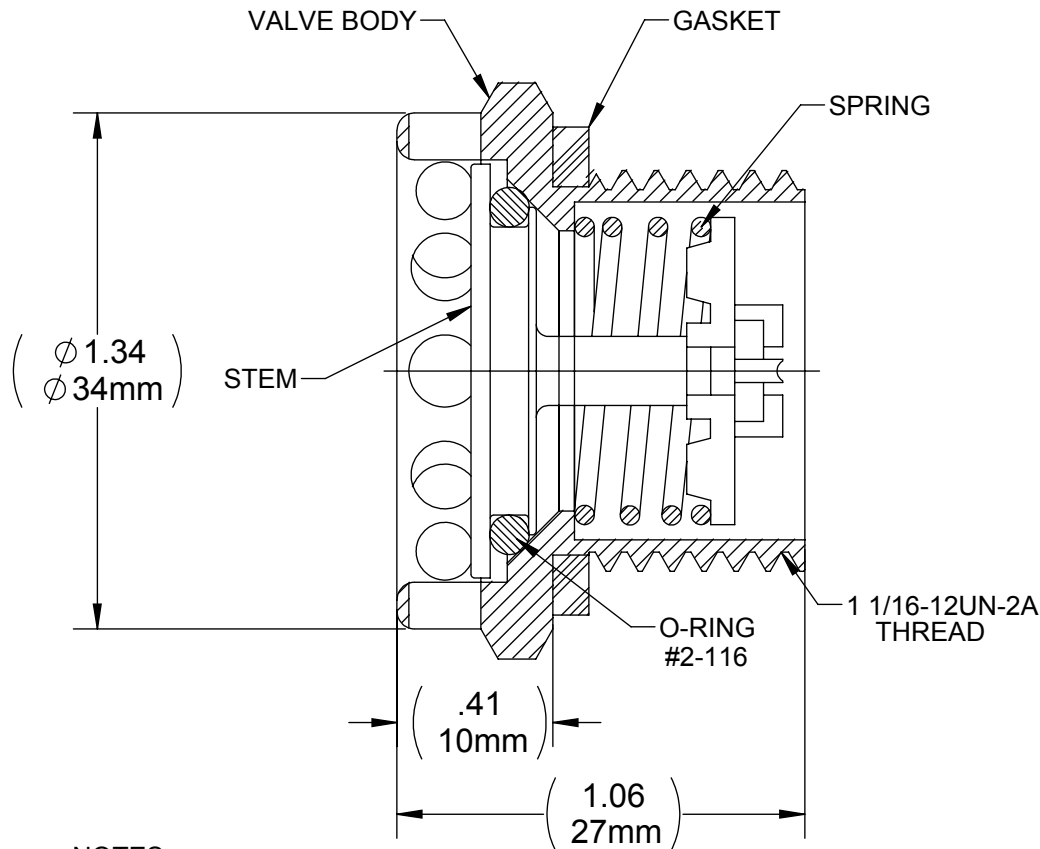
REV

D

Customer Drawing

REVISION HISTORY

REV	DESCRIPTION (ECO)	DATE	APPROVED
C	UPDATE BORDER, NOTES, ADD CRITICAL DIMS. ECN 4261	12/01/09	AK
D	REMOVE INACTIVE SUFFIX'S , UPDATE BORDER ADD SUFFIX 13 - 9.0 PSI - ECN 4651	1/11/11	L.F.



NOTES:

1. SUFFIX, "XX" INDICATES SPRING (PRESSURE):

00 - 2.5 PSI	06 - 6.0 PSI	11 - 0.15 PSI
01 - 0.5 "	07 - 3.0 "	13 - 9.0 "
02 - 0.05 "	08 - 0.1 "	

2. CRITICAL DIMENSIONS ARE CIRCLED AND SUBJECT TO INSPECTION.
3. DIMENSIONS IN PARENTHESES ARE FOR REFERENCE ONLY.
4. ALL DIMENSIONS ARE IN INCHES WITH NOMINAL IN METRIC BELOW

MOLDED PARTS:

GATES, PARTING LINES, AND FLASH PER QUALITY CRITERIA

PROPRIETARY AND CONFIDENTIAL

THE INFORMATION CONTAINED IN THIS DRAWING IS SOLE PROPERTY OF HALKEY-ROBERTS CORPORATION ST. PETERSBURG, FL. ANY REPRODUCTION IN PART OR AS A WHOLE WITHOUT THE WRITTEN PERMISSION OF HALKEY-ROBERTS CORPORATION IS PROHIBITED.

DRAWN BY M.S. DATE 10-02-97

APPROVED BY JW DATE 10-02-97

MATERIAL

FINISH

UNLESS OTHERWISE SPECIFIED:

DIMENSIONS ARE IN INCHES

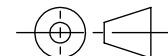
TOLERANCES:

ANGULAR: ± 1°

TWO PLACE DECIMAL ± .01

THREE PLACE DECIMAL ± .005

THIRD ANGLE PROJECTION



Halkey-Roberts

TITLE RELIEF VALVE

SIZE

A

DRAWING NO.

C984XX0022

REV

D

SCALE

2:1

DO NOT SCALE DRAWING

SHEET

1 OF 2