

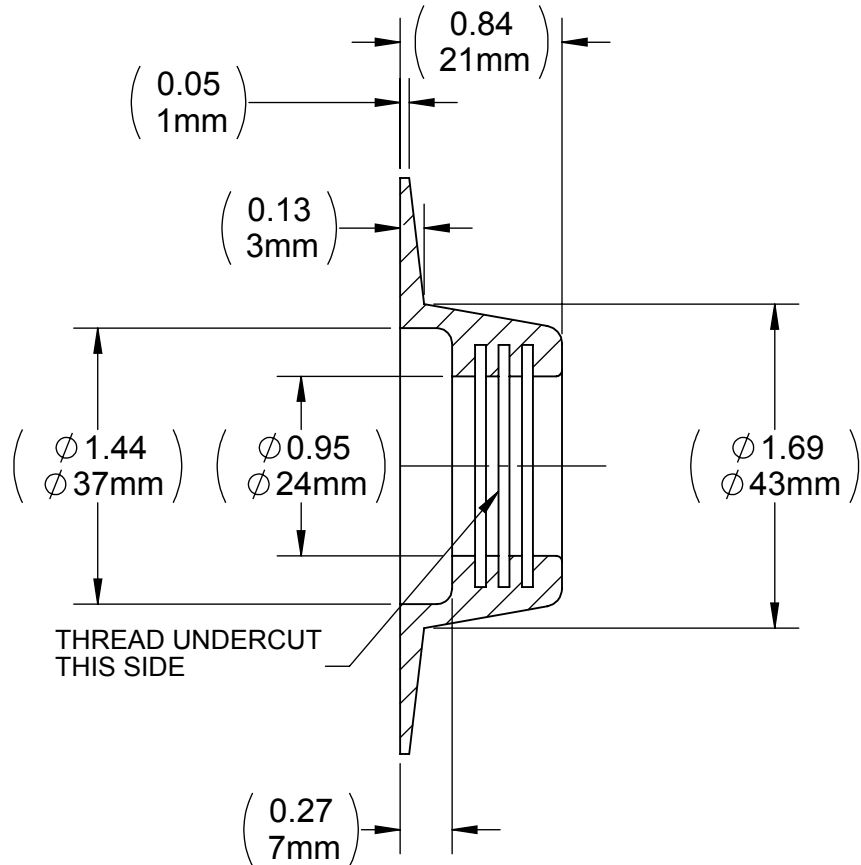
C787RPF

REV
B

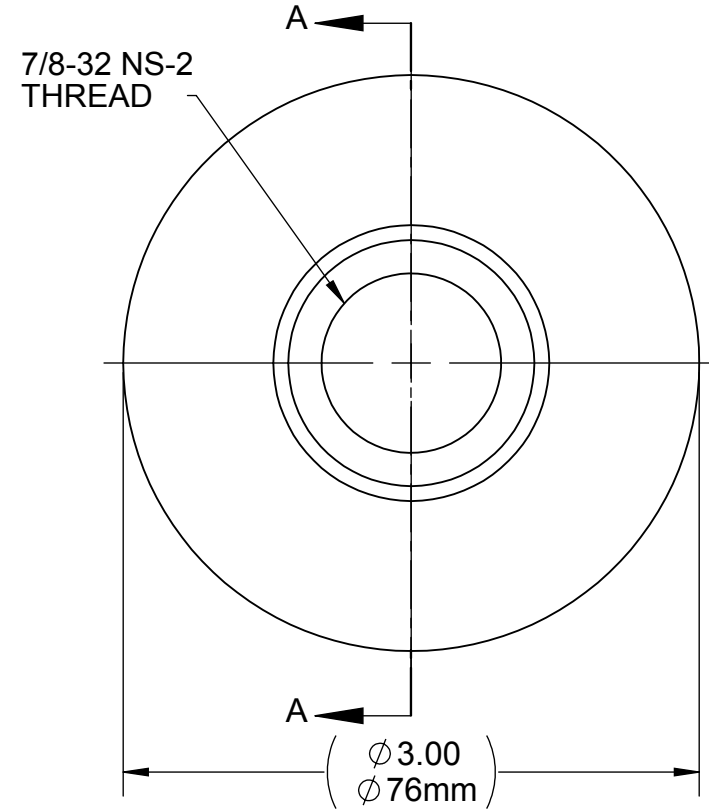
Customer Drawing

REVISION HISTORY

REV	DESCRIPTION (ECO)	DATE	APPROVED
1	REDRAWN	02-28-96	JW
B	UPDATE BORDER, NOTES, ADD METRIC DIMS. ECN 4240	11/10/09	AK



SECTION A-A



NOTES:

1. MATERIAL: NEOPRENE 80 DURO SHORE A
2. TEMP RESISTANT -65°F TO 180°F.
3. CRITICAL DIMENSIONS ARE CIRCLED AND SUBJECT TO INSPECTION.
4. DIMENSIONS IN PARENTHESES ARE FOR REFERENCE ONLY.
5. ALL DIMENSIONS ARE IN INCHES WITH NOMINAL DIMENSION IN METRIC BELOW.

TOOLING:	PART NO.	IFU:
SEALING DIE:	-----	-----
ASSEMBLY:		IFU-787RPF

MOLDED PARTS:
GATES, PARTING LINES, AND FLASH PER QUALITY CRITERIA

PROPRIETARY AND CONFIDENTIAL
THE INFORMATION CONTAINED IN THIS DRAWING IS SOLE PROPERTY OF HALKEY-ROBERTS CORPORATION ST. PETERSBURG, FL. ANY REPRODUCTION IN PART OR AS A WHOLE WITHOUT THE WRITTEN PERMISSION OF HALKEY-ROBERTS CORPORATION IS PROHIBITED.

DRAWN BY	JHK	DATE	04/17/75
APPROVED BY		DATE	
MATERIAL	NEOPRENE 80 DURO SHORE A		
FINISH			
UNLESS OTHERWISE SPECIFIED: DIMENSIONS ARE IN INCHES TOLERANCES: ± 1* TWO PLACE DECIMAL ± .01 THREE PLACE DECIMAL ± .005	THIRD ANGLE PROJECTION		



TITLE		FLANGE 780 VALVE	
SIZE	A	DRAWING NO.	C787RPF
SCALE	1:1	SHEET	1 OF 1
		REV	B

DO NOT SCALE DRAWING