

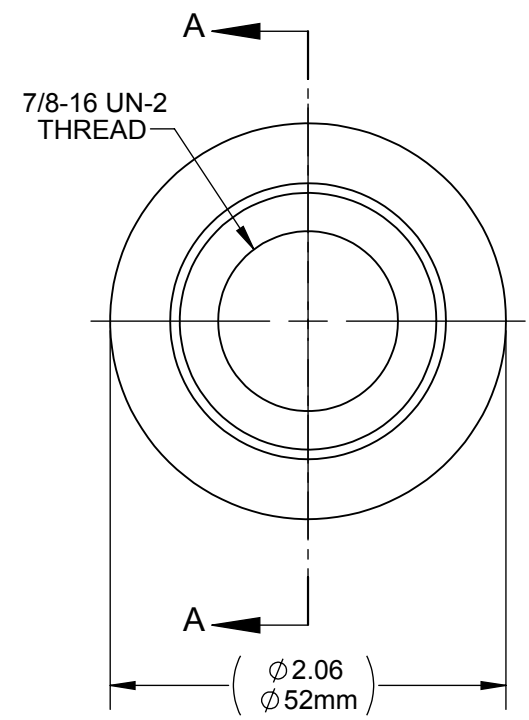
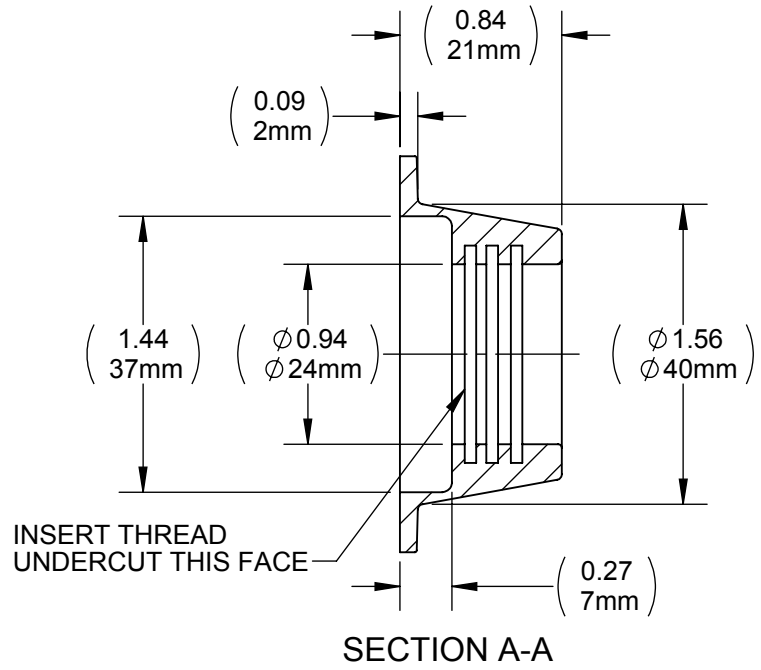
DRAWING NO.
C787SPFX

REV
B

Customer Drawing

REVISION HISTORY

REV	DESCRIPTION (ECO)	DATE	APPROVED
1	C787SPFX REPLACE C787SPFU SPFV, REDRAWN	08-04-99	JW
B	UPDATE BORDER, ADD METRIC DIM'S, NOTES, ECN 4240	11/17/09	AK



TOOLING:	PART NO.	IFU:
SEALING DIE:	D787RP	-----

NOTES:

- SUFFIX, "X" INDICATES MATERIAL & COLOR:
U - BLACK POLYURETHANE
- CRITICAL DIMENSIONS ARE CIRCLED AND SUBJECT TO INSPECTION.
- DIMENSIONS IN PARENTHESES ARE FOR REFERENCE ONLY.
- ALL DIMENSIONS ARE IN INCHES WITH NOMINAL DIMENSION IN METRIC BELOW.

MOLDED PARTS:
GATES, PARTING LINES, AND FLASH PER QUALITY CRITERIA

PROPRIETARY AND CONFIDENTIAL
THE INFORMATION CONTAINED IN THIS DRAWING IS SOLE PROPERTY OF HALKEY-ROBERTS CORPORATION ST. PETERSBURG, FL. ANY REPRODUCTION IN PART OR AS A WHOLE WITHOUT THE WRITTEN PERMISSION OF HALKEY-ROBERTS CORPORATION IS PROHIBITED.

DRAWN BY	M.S.	DATE	08-04-99
APPROVED BY		DATE	
MATERIAL			
FINISH			
UNLESS OTHERWISE SPECIFIED: DIMENSIONS ARE IN INCHES TOLERANCES: ANGULAR: ± 1° TWO PLACE DECIMAL ± .01 THREE PLACE DECIMAL ± .005	THIRD ANGLE PROJECTION		

Halkey-Roberts

TITLE **FLANGE, 780 VALVE**

SIZE **A** DRAWING NO. **C787SPFX** REV **B**

SCALE **1:1** SHEET **1 OF 1**